



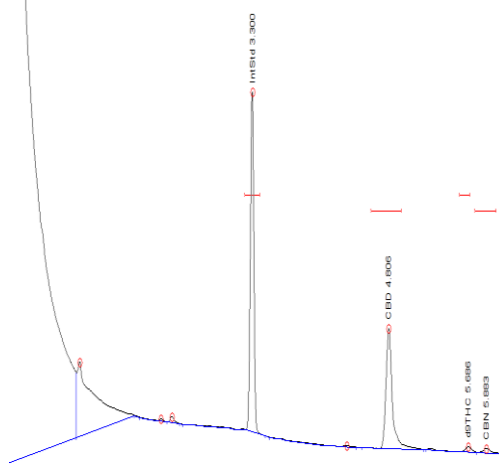
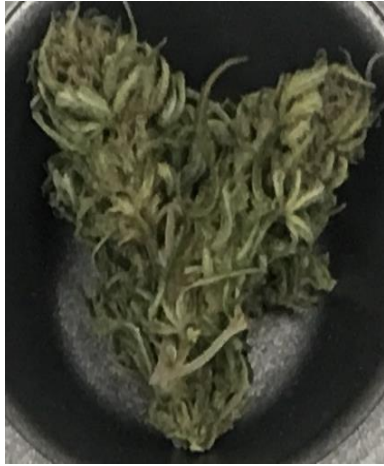
Phone: (802) 885-8649

Website: www.cranalyticallabs.com

Email: admin@cranalyticallabs.com

Certificate of Analysis

Customers Name: All Bliss Cannabis Sample: CW X ACDC Type: Flower Method: GC Hemp Registration Batch #: ABC19CW-1B	Test Conditions Scale: EB Model 2003 Temp: 71° F Humidity: 45% Baro. Pressure: 987.5 hPa Technician: FR	Receiving Technician: FR Serving Size (g): 1.0 Collection Date: 09-27-2019 Date Received: 09-30-19 Test Date: 10-05-19 Test Certificate #: 101019-14
---	---	---



CANNABINOID PROFILE

Test Compounds	THCV*	THC	THCA-A	d8-THC*	CBDV*	CBD	CBD-A	CBG*	CBN
Amount	N/D	0.3821%	N/D	N/D	N/D	10.3042%	N/D	N/D	0.3889%
	0.3%	0.3%	0.3%	0.3%	0.3%	0.3%	0.3%	0.3%	0.3%
Uncertainty	+5% RSD	+5% RSD	+5% RSD	+5% RSD	+5% RSD	+5% RSD	+5% RSD	+5% RSD	+5% RSD

Humidity:	N/A
Total THC	0.3821%
Total CBD	10.6931%

LOQ= Limit of Quantitation; %RSD= Relative Standard Deviation; N/D = Not Detected
 *Designates Compounds that are not currently included in CR Analytical Labs accredited scope.
 N/A= Not Applicable

Calc. Max is calculated sum of CBD or THC and the amount of CBD or THC derived from CBDA or THCA, respectively.

These values are calculated by applying a molar correction factor of 0.877 to the CBDA or THCA value.

Notes:

This analysis process was performed in accordance with the requirements of ISO/IES 17025. Values reported relate only to the product tested. CR Analytical Labs makes no claims as to the efficacy, safety, or other risks associated with any detected or non-detected levels of any compound reported herein. These results relate only to the test article listed in this report. Reports may not be reproduced except in their entirety. All testing is performed by either industry accepted method or internal methodology developed, validated and controlled under AOAC or ICH guidelines.

Dr. Fabio Rodi
 Lab Manager

CR Analytical Labs, LLC is a participant in second party sponsored proficiency testing and is currently in the process of receiving ISO/IEC 17025:2017 Testing Laboratory, accredited by (PJLA) Perry Johnson Laboratory Accreditation,.
 Any inquiries regarding results please contact admin@cranalyticallabs.com